

# Yolo Example

```
library(image.darknet)

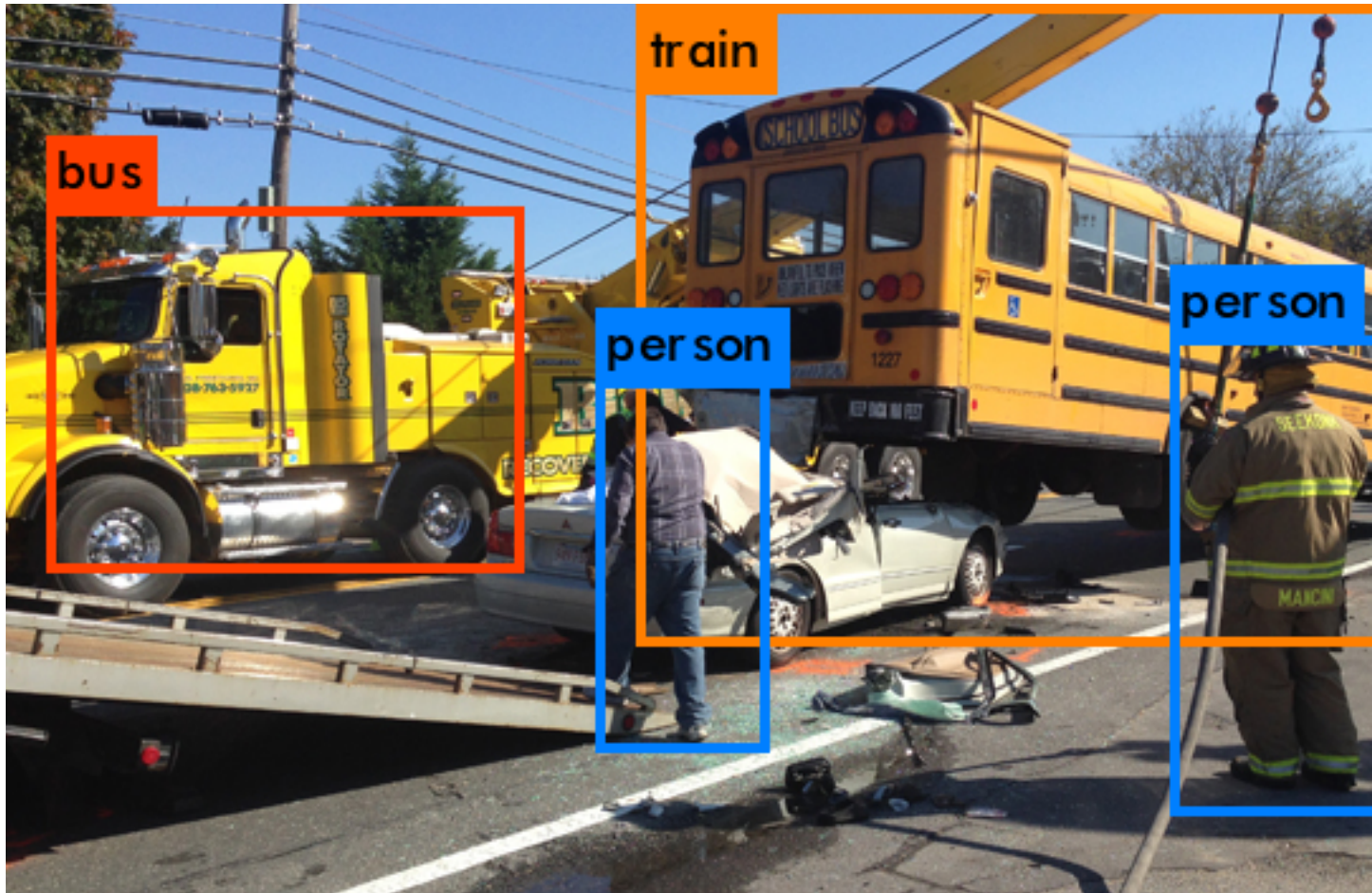
yolo_tiny_voc <- image_darknet_model(type = 'detect', model = "tiny-yolo-voc.cfg",
  weights = system.file(package="image.darknet", "models", "tiny-yolo-voc.weights"),
  labels = system.file(package="image.darknet", "include", "darknet", "data", "voc.names"))

x <- image_darknet_detect(file = "/home/esuess/classes/2018-2019/02 - Spring 2019/Stat654/Final/google_...
  object = yolo_tiny_voc,
  threshold = 0.19)

x

## NULL

knitr::include_graphics('/home/esuess/classes/2018-2019/02 - Spring 2019/Stat654/Final/predictions.png')
```



```
x <- image_darknet_detect(file = "/home/esuess/classes/2018-2019/02 - Spring 2019/Stat654/busax.jpg",
  object = yolo_tiny_voc,
  threshold = 0.25)

x
```

## NULL

knitr::include\_graphics('/home/esuess/classes/2018-2019/02 - Spring 2019/Stat654/Final/predictions.png')

